

ONYXWorks[®] IP

Graphical Fire System Monitoring

Data Sheet



Local and Remote Fire System Monitoring

ONYXWorks is Notifier's next generation of integration technology – a PC based graphical workstation that displays fire information directly from your live system.

Using both text and colour graphical display, the ONYXWorks PC workstation allows the operator to view and manage multiple local device networks and remote sites. It is an ideal addition to the ID²net network and the perfect retrofit solution to integrate existing fire alarm panels.

Intuitive User Interface

ONYXWorks has an intuitive graphic user interface to facilitate setup and minimise operator training. The system displays and controls fire alarm panels from a single computer interface.

ONYXWorks presents graphical floor plans for fire and non-fire reporting as well as a history manager that tracks, stores and filters events for viewing.

ONYXWorks is an event manager for a range of fire alarm control panels and life safety systems. Operators are presented with a consistent interface for all monitored equipment. The workstation features customisable screens and has many configuration options to meet your specific needs, further simplifying every day use.

Flexibility

By using a system of Gateways and plug-ins, ONYXWorks allows the system to be easily expanded and altered during an installation's life. The system is based on TCP/IP networks allowing the reuse of existing infrastructure giving a greater degree of flexibility as the workstation can now be remotely located from the panel network or even the site itself.

Traceability and Security

ONYXWorks Security Profiles prohibit unauthorised access. System Administrators define and maintain unique security profiles as well as determine which users have access to ONYXWorks. This, coupled with a History log, allows for a full audit trail, recording all event details and operators' actions. The History log also includes powerful search tools allowing any potential maintenance issues to be identified proactively.

Easy System Setup

ONYXWorks' setup is simplified by allowing the import of existing files of your building plans. CAD floor plans can be imported as bitmap (BMP) or Windows[®] Metafiles (WMF) directly into ONYXWorks for decreased system configuration time. Its Autocreation of Devices function allows rapid addition of a device on your system. The Autocreation of Devices in the workstation automates setup and provides the icon. This utility then adds the device icon into the floor plan with all the pertinent information.

ONYXWorks® IP Graphical User Interface

User Interface

- All off-normal events displayed simultaneously with text and corresponding graphic screens.
- Automatic screen navigation (selectable for each device) that locates and zooms to the device related to an alarm or event, based on the priority of the event.
- Dynamically generated floor plan overview.
- Floor plans can be zoomed in and out and devices can be placed at different zoom levels.
- Full linked multimedia (text, audio, video, and bitmaps) to any device, all definable by the administrator.
- Intuitive navigational tree and icons for easy access to building floorplans.

Event Notification and Response

- Real-time event printing of system-wide events.
- Control of fire panels (extent of control determined by panel model).
- Operator log with response tracking.
- Alphanumeric paging and e-mail notification with configurable message format.
- History Manager records operator, event, and response (with time and date stamp) to disk.
- Various states can be visually represented for each input device: Normal, Trouble, Fire Alarm, Pre-Alarm (detectors), Disablesments.

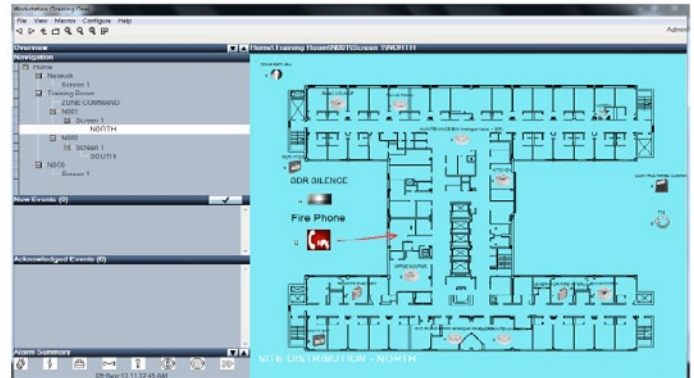
System Setup

- Graphic Editing mode allows on-site programming of floor plan screens, device icons, functional and navigational buttons.
- Import converted vector drawing files (.WMF), and bitmap files from existing CAD floor plan drawings (.BMP, .JPG, and .GIF).
- Graphics printing for floor plans and reports.
- Customizable device icon and colors to visually represent each event type.
- User defined icons can be added to the workstation (.PNG, .BMP, .WMF, .JPG, and .GIF formats).

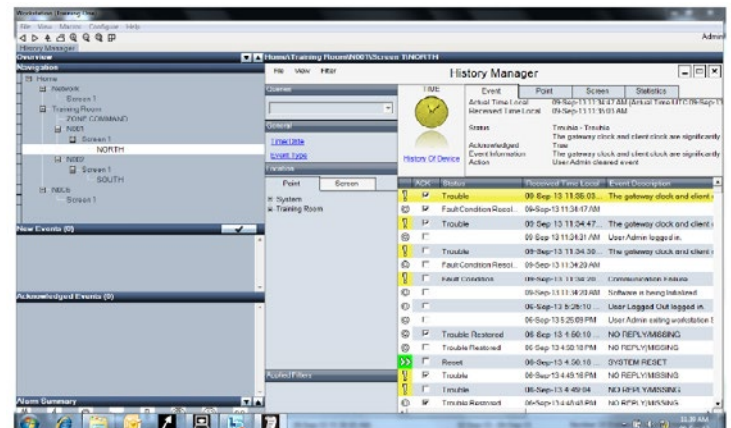
Secure Access

- System Administrator-definable security, monitoring, and control profiles allow for extremely flexible definition of operator accounts.
- Operator Login/Logout/Change Password feature allows only authorized personnel to access the system.
- Logs in history of any operator changes in the workstation.

End User Operator Screen



History Log



Configuration Tool



ONYXWorks® IP Remote Monitoring

The ONYXWorks system is an ideal component for real-time fire system status and system control options. ONYXWorks interfaces directly to a Notifier fire system using an IP Nion. The IP Nion is an intelligent interface used by an ONYXWorks system that facilitates monitoring and control of a Notifier Fire system.

The IP Nion gateway enables users to monitor multiple sites (local or remote) over an IP network.



Specifications

ONYX-CTRL-PC Fire Graphics PC

- PC: Windows 7 Ultimate 64BIT PC
3rd Gen Intel Core i5-3470
Processor (Quad core, 3.20 GHz
Turbo, 6MB, w/ HD2500 Graphics)
4GB memory (2 x 2GB) 1600 MHz
DDR3 Non-ECC
1GB Graphics AMD Radeon HD7570
500GB Hard Drive
16XDVD+/-RW Optical drive
- Software: ONYXWorks preinstalled
ONYXWorks USB Dongle
- Included: Keyboard, Mouse
- Max Qty: 50 workstations per system
- IP Link: Static IP address required

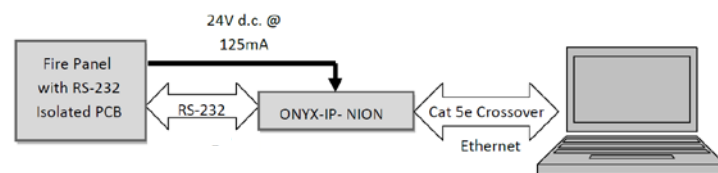
ONYX-CTRL-SW

- Software: ONYXworks
- Software: ONYXWorks USB Dongle
- Requires PC with minimum system requirements:
 - Windows7 64BIT Pro
 - Microsoft® Internet Explorer version 10 or higher
 - Java™ version 6.0 or later
- Max Qty: 50 workstations per system
- IP Link: Static IP address required

ONYX-IP-NION

- Power input: 24 VDC
- Input current: 450 mA @ 24 VDC
- Operating temperature: 0°C to 49°C
- Connection : to ID3000 fitted with RS232 Comm. card
- IP-Nion: Max. 200 per system
- IP Link: Static IP address required

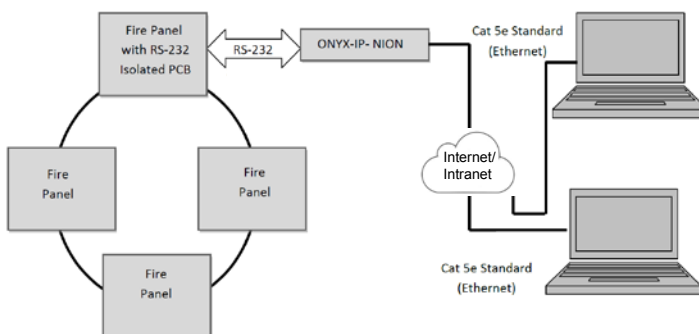
Local Monitoring










The table below shows the systems ONYXWorks is currently compatible with.

Control Panel	ONYXWorks Compatibility
ID60	✘
Pearl	✘
ID2000	✘
ID3000 (non-sectored systems)	✓
ID3000 (sectored systems)	✓

Remote System Monitoring



Product Range at a Glance

ONYXWorks Fire Graphics Systems	Part Number
New Installations	
 <p>ONYXWorks Fire Graphics Complete PC. Includes PC, Mouse, Keyboard. Windows 7 and ONYXWorks IP Software Pre-Installed. No Monitor included.</p>	ONYX-CTRL-PC
 <p>19" Flat Panel Monitor</p>	991-092
 <p>ONYXWorks Fire Graphics software only, requires Windows 7 64 bit Pro PC.</p>	ONYX-CTRL-SW
 <p>IP Gateway (NION), for connection to Notifier fire panel. Requires dc power and enclosure</p>	ONYX-IP-NION
 <p>Multi-Mount Enclosure. Metal, NOTIFIER Black/Grey. The enclosure is capable of housing: one ONYX-IP-NION.</p>	002-439
Upgrade of Existing Installations (ONYXWorks license can be carried over from previous installation)	
 <p>ONYXWorks Fire Graphics Complete PC. Includes PC, Mouse, Keyboard. Windows 7 and ONYXWorks IP Software Pre-Installed (no software licence) .No Monitor included.</p>	ONYX-SW-PC
 <p>IP Gateway (NION), for connection to Notifier fire panel. Requires dc power and enclosure</p>	ONYX-IP-NION